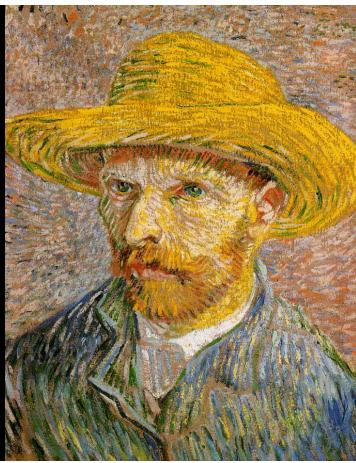


MD 2009

# Man in a Straw Hat



Self-Portrait  
With Straw Hat  
Vincent van Gogh  
About 1888

Sample Slide



In 1886, Vincent van Gogh moved to Paris to live with his brother Theo. He was very poor, much too poor to pay models to sit for him so he painted self-portraits - these were called self portraits.

Sample Slide



In this portrait, van Gogh shaped his straw hat, face and jacket with **directional strokes of paint**. He formed the **curved lines** and gave it its **contour and texture**.

Sample Slide



He used **diagonal marks** to show the sharpness of his cheek bones and his forehead.

He used blue green **curved lines** to show the crump

Sample Slide



Van Gogh used bright colours side by side over a tan **background** which, in places, he left uncovered by his brushstrokes.

Sample Slide



Instead of mixing colours on his **palette**, he painted **strokes** of red and green to make the shadow on his forehead. The **dashes** of yellow on the face and jacket show the **texture** of his yellow hat in the sunshine.

Sample Slide



Over the space of two years, Vincent van Gogh painted twenty-two self portraits that show all his emotions during that time.

By looking at his portraits it is possible to guess how he was feeling - sad or serious.

Sample Slide



KS1Resources.co.uk

[www.ks1resources.co.uk](http://www.ks1resources.co.uk)