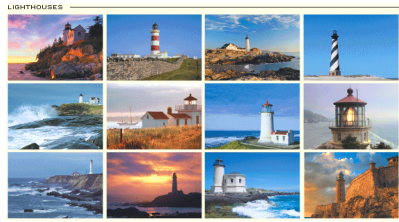


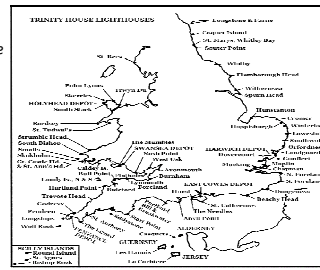


Where are lighthouses found?



With thanks to Adelaide for this presentation.

This map shows where lots of lighthouses can be found!



Have you ever visited a lighthouse? Is there one near to where you live?

Here are some more places where they can be found...



On rocky cliffs.



On harbour tops.



On sandy shoals.



On a wave swept reef in the sea.



At the entrance to a harbour or a bay.



In the middle of the sea!

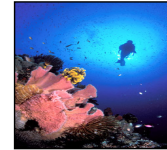
Can you guess why lighthouses are used in these places?



Portland Bill



Longstone Lighthouse



They are used to warn ships about reefs beneath the sea.....

and rocky coasts on land.



They warn of hidden rocks under the sea.



They also help ships to get in and out of harbours.

[Making our lighthouses - Y2](#)

Lighthouses are very important and have helped to save many lives.



Smalls Lighthouse



Beachy Head Lighthouse



Bell Rock Lighthouse during a storm.



Wolf Rock Lighthouse during a storm in 1970

These pictures show just how dangerous the sea can be!

